



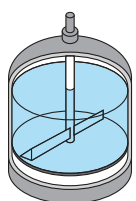
All-In-One Pharma-Grade Filtration, Washing & Drying



CBD Isolate

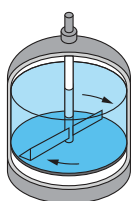
Step up your game with the Steri Technologies ZWAG Agitated Nutsche filter dryer. These filters are widely used in active pharmaceutical ingredient production, and are capable of meeting the strictest safety and regulatory requirements. The integrated high-torque agitator allows for complete washing of the product, and drying to undetectable solvent levels, all in a fully-enclosed environment.

STEP-BY-STEP FOR QUALITY PERFORMANCE



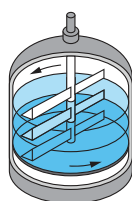
1
**ALL-IN-ONE
OPERATION**

Sized for your production batch, your ZWAG is never a bottleneck.



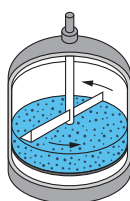
2
**STIRRING
FOR SLOW-
FILTERING
PRODUCTS**

After filling, continuous stirring just above the filter plate reduces filtration time.



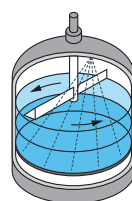
3
**UNIFORMITY
FOR QUICK-
FILTERING
PRODUCTS**

The cake is layered with evenly distributed particles by progressively raising the agitator blades.



4
**PRESS FOR
QUALITY**

The agitator smooths down the cake to close cracks and create a uniformly permeable structure.



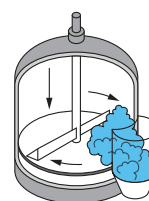
5
**WASH FOR
QUALITY**

Liquid is sprayed evenly over the cake for thorough diffusion washing, and can be easily re-slurried for greater purity.



6
**UNIFORM
DRYING**

Solids are kept moving over the heated bottom for speedy, complete drying.



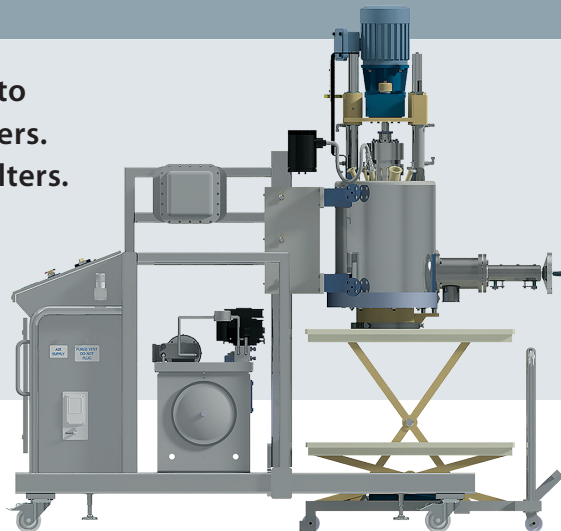
7
**TOP DOWN
DISCHARGE**

The agitator blades scrape the cake through the side door from top to bottom.

Steri Rental Filters

Try Then Buy Program

There is nothing better than hands-on experience to judge the feasibility and performance of ZWAG filters. Steri is proud to offer an extensive fleet of rental filters. These are used by companies to meet temporary filtration needs, perform trials for scale up, or even try out the equipment and purchase the unit that is already on site.



TECHNICAL SPECIFICATIONS

SIZING

- Total Volume: 16.5 Gal (52L)
- Batch Size: 10.5 Gal (40L)
- Max Cake Volume: 5.5 Gal (21L)
- Filtration Area: 0.1m²

VESSEL & JACKET SPECIFICATION

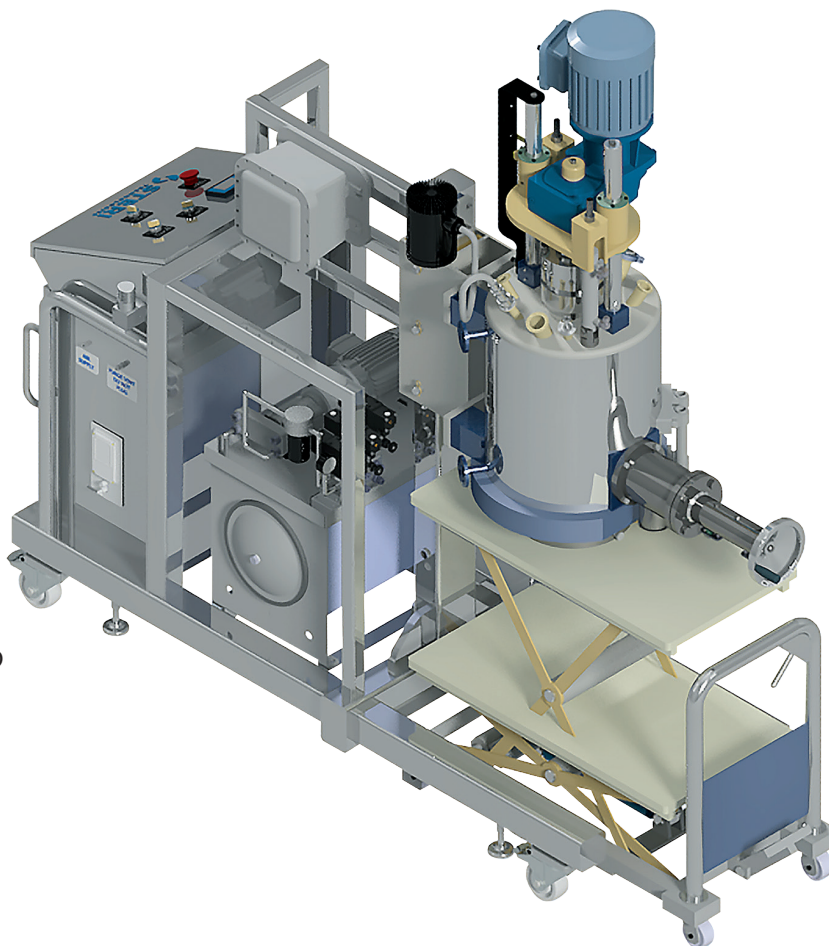
- Design Pressure: 90 PSIG
- Design Temperature: -20°F to 350°F
- Heat Transfer Area: 6.8 ft²

MATERIAL OF CONSTRUCTION

- Wetted Parts: 316L Stainless Steel
- Jacket: 304L Stainless Steel
- Frame: 304L Stainless Steel

ELECTRICAL

- Agitator: 1.5HP Motor
- Hydraulics: 2 HP Motor
- Voltage: 3ph/60hz/220V
- ExProof Rating: Class 1 Div II Groups C&D



ADDITIONAL STERI ZWAG RENTAL FILTERS

- 0.5m² in C276: 80 Gal Batch
- 0.5m² in 316L: 80 Gal Batch
- 0.1m² in 316L: 10.5 Gal Batch

STERI TECHNOLOGIES LLC

857 Lincoln Avenue • Bohemia, New York 11716 • USA
Telephone: (631) 563-8300 • Sales@Steri.com

PROUDLY HEADQUARTERED, FABRICATED AND ASSEMBLED IN THE UNITED STATES OF AMERICA