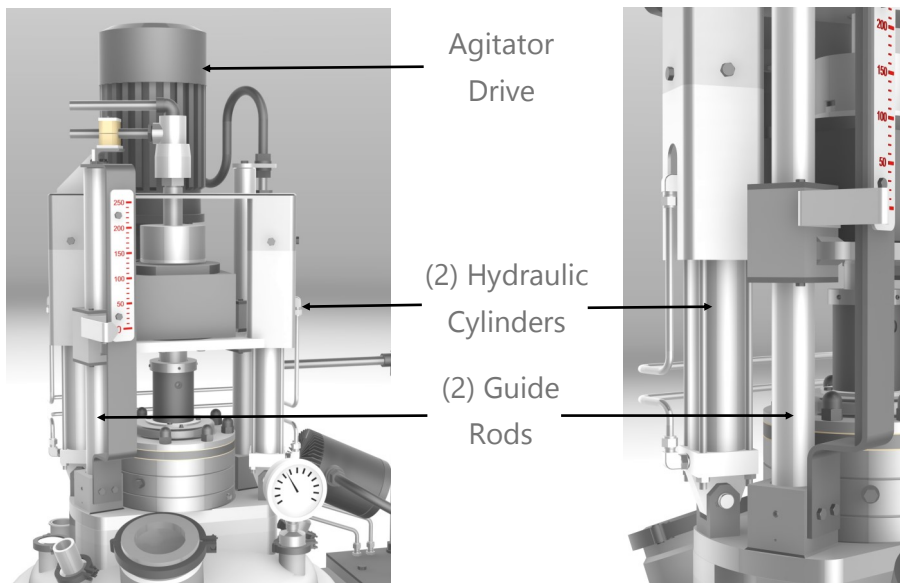


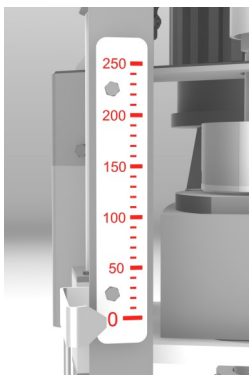
When ordered with a hydraulically operated, vertically moving agitator there are several productivity enhancements available; such as a agitator travel indicator, a linear potentiometer for remote agitator travel indication, and guide rod bellows.

Hydraulic Operated



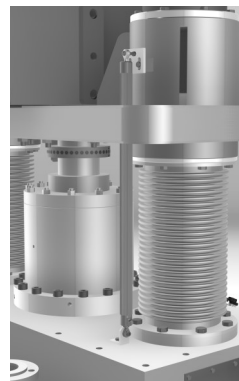
The agitator and the agitator drive, including the gear box, are mounted to a horizontal plate atop the filter vessel. The agitator moves along with this whole assembly which is driven up and down by two hydraulic cylinders. This arrangement allows the agitator to continue rotating while moving up or down. The agitator can be set to cycle up and down on its own can be stopped and held at any desired height.

Features



Each ZWAG filter comes equipped with a **agitator travel indicator**.

Remote indication of the agitator can be provided by a **linear potentiometer**. The linear potentiometer provides the exact position



of the agitator blade in real-time. This device can be factory installed, or retro-fitted onto any Steri ZWAG filter. It can be wired into DCS and/or the local control panel.

For ZWAG filters with vertically actuated agitators, **bellows** can be fitted to the guide rods to keep the rods clean for smooth, reliable, operation, or to keep the work environment free from contamination.

