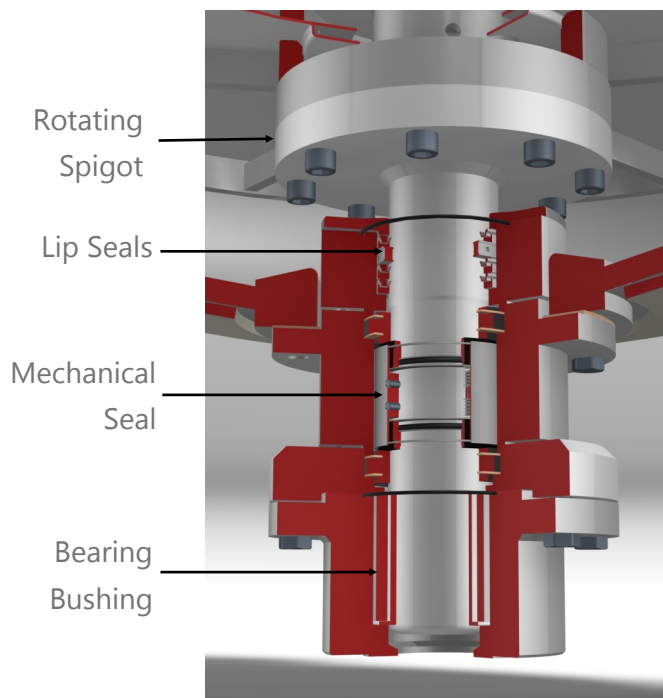


The Type A filter has a rotating spigot connected to the filter shaft while the seal is solidly bolted to the bottom of the filter vessel. When installing the filter nest, the spigot at the lower end of the filter shaft slips into the lower seal. The lower seal consists of a bearing bushing made of PTFE, with lips seals on both sides.

Mechanical Seal

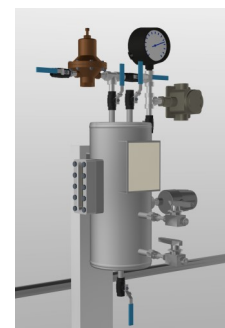


Double Mechanical Seal with Bushing

On the Type A filter the spigot is bolted to the bottom end of the filter shaft and rotates with the shaft during cake discharge. The rotating spigot is sealed in two stages. The upper stage is houses a series of lip seals. The lower stage is the double mechanical seal. It is mounted onto the outside of the filter vessel. Beyond the mechanical is the bearing bushing, which is bolted to the outer end of the mechanical seal. The bearing bushing carries the radial loads of the bottom end of the filter shaft during rotation. This configuration permits minimum down time for the replacement of either the mechanical seal or the bearing bushing since the filter nest does not need to be removed.

Seal Pot

Seal Pot with optional level switch, pressure switch and pressure regulator. The pot is ASME certified.



Optional Seal Pot

Stuffing Box & Lip Seal Design

Stuffing box and lip seals are suitable for less stringent, moderate pressures and temperatures where non-hazardous materials are used. They offer reduced cost and are easily maintained. Lower seal assemblies can be configured with a variety of seal types and materials as applicable for the process conditions and the materials being handled. Seals options such as flushing and packing with gland are available. The seal housing is mounted onto the outside of the filter vessel. Beyond the seal housing is the bearing bushing, which is bolted to the outer end of the mechanical seal. The bearing bushing carries the radial loads of the bottom end of the filter shaft during rotation. This configuration permits minimum down time for the replacement of either the seals or the bearing bushing since the filter nest does not need to be removed.